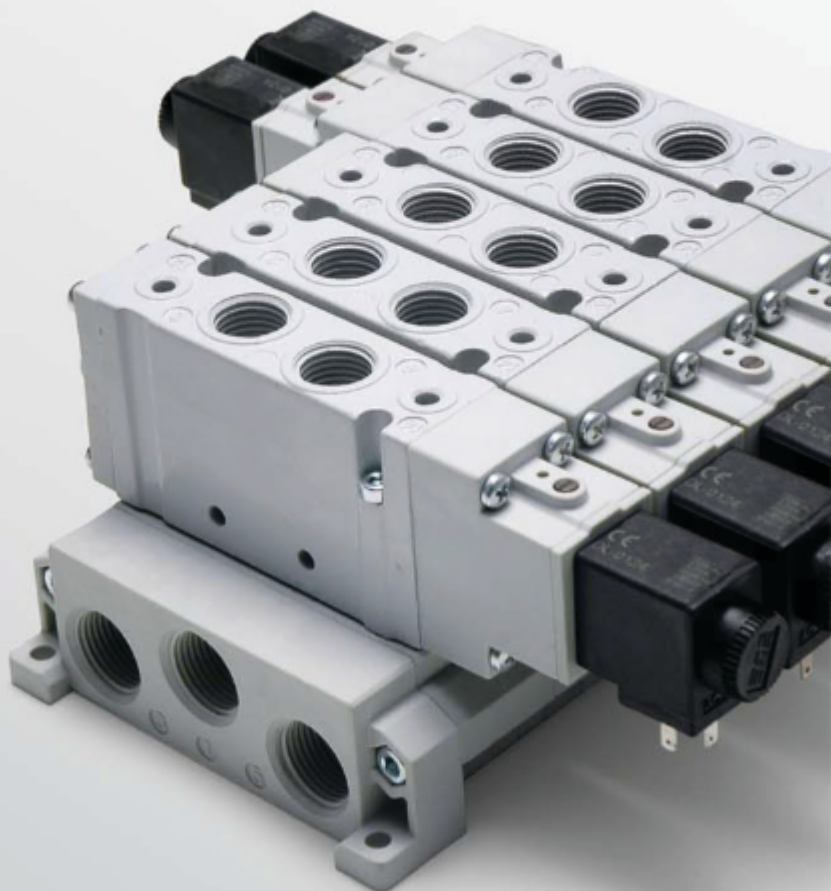


## INLINE AND SUB BASE MOUNTED VALVES

EL series

18 mm - G1/8

22 mm - G1/4



**EL series valves 18 mm (G1/8) 22 mm (G1/4)**

**HIGH FLOW RATE**

800 NI/min (G1/8) 1700 NI/min (G1/4)

**REDUCED DIMENSIONS**

18 mm (G1/8) 22 mm (G1/4)

**COMPLETE SOLUTION**

5/2 Monostable/Bistable

5/3 Closed centers/Open centers/Pressurized centers

3/2 NC+3/2 NC

3/2 NC+3/2 NO

3/2 NO+3/2 NO

**STRONG**

Metallic body

**G1/8**



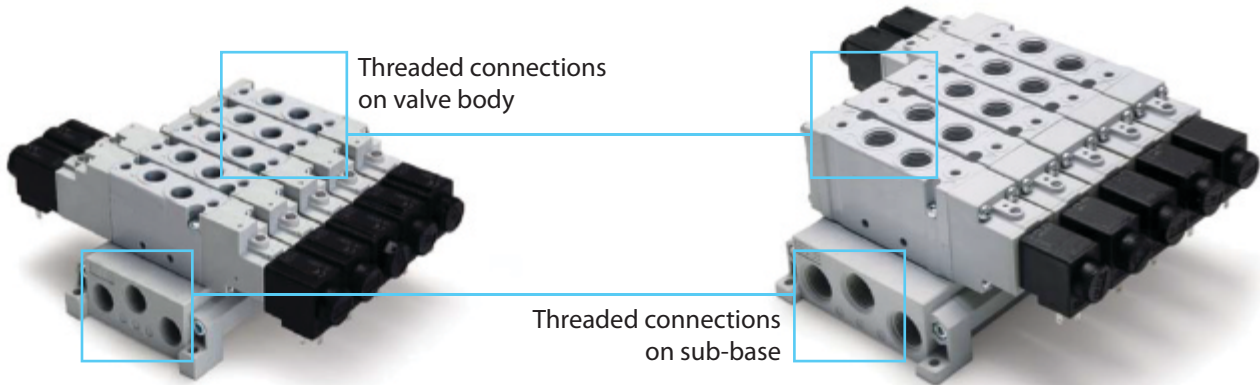
**G1/4**



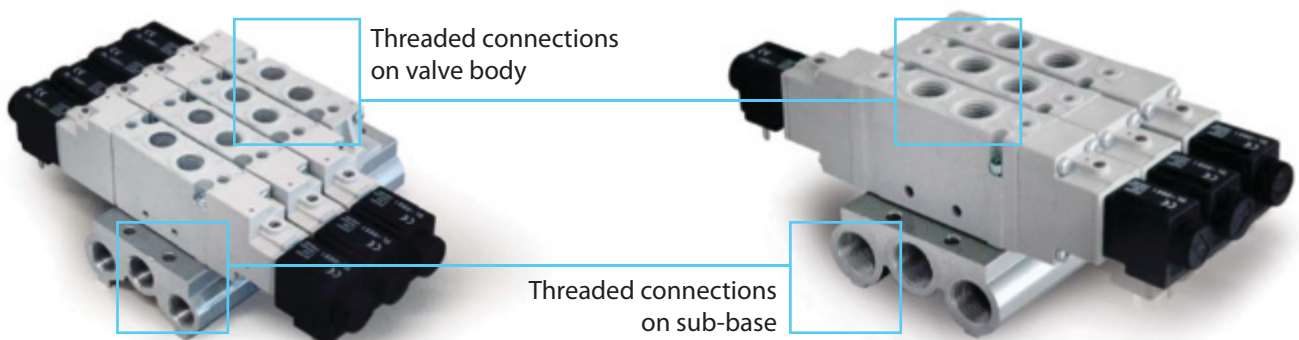
**EL18F G1/8**

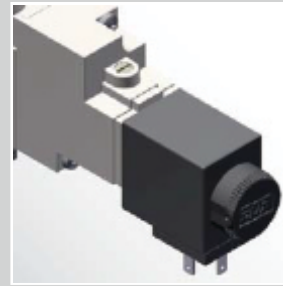
**EL22F G1/4**

**Modular sub-base in technopolymer**

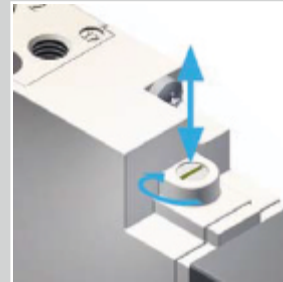


**Aluminum Sub-base**

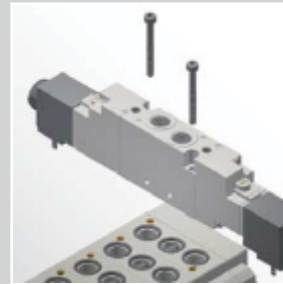




**Interchangeable U06 coil**  
12 - 24 V DC  
24 - 110 - 220 V AC



**Manual override (standard)**  
1/2 position impulse



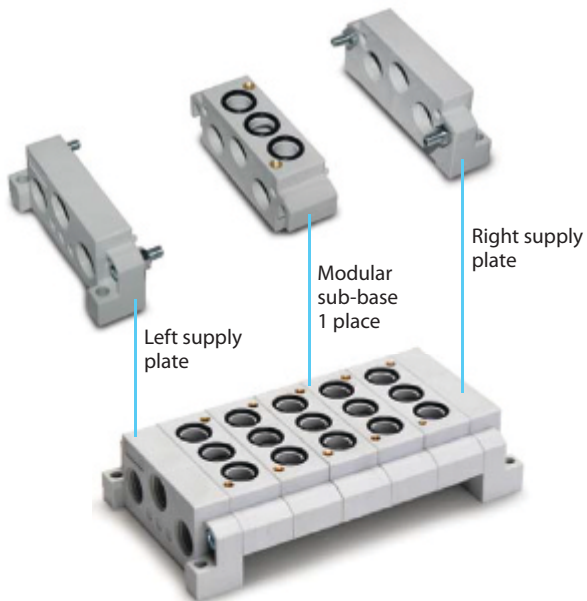
**Sub-base mounting**  
Easy installation by means of 2 screws



**Individual mounting**  
Side holes on valve body



**Traditional technology**  
The dynamic spool guarantees a long life and reliability



**1 to 10 positions**



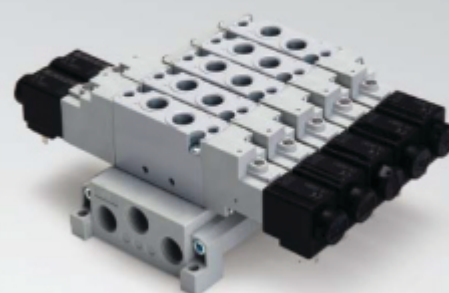


# EL18F

ESSENTIAL Valves 18 mm - G1/8

Available ATEX version upon request

CE II 3 GD c nAII T5 - 10°C ≤ Ta ≤ 45°C



## TECHNICAL CHARACTERISTICS

Ambient temperature	-5 to 50 °C
Fluid temperature	Max 50 °C
Fluid	filtered air 10 µm, with or without lubrication
Mechanical system	spool
Ways/positions	5/2 - 5/3 - 3/2+3/2
Max pressure	8 bar (electrical override) 10 bar (pneumatic override)
Control	indirect electropneumatic, pneumatic
Return	mechanical spring, pneumomechanical spring, pneumatic amplified, electrical amplified
Connections	G1/8
Nominal flowrate (NI/min)	800 (5/2) 720 (5/3) 720 (3/2+3/2)

## CONSTRUCTIVE DATA

Valve body	zamak
Seals	nitrile rubber
Actuators	technopolymer
Sub-base	technopolymer/aluminum
Spool	aluminum

## ELECTRICAL CHARACTERISTICS

Electropilot	electropilot U06
Coil	DL series
Voltage	12 V DC - 24 V DC - 24 V AC - 110 V AC - 230 V AC
Power consumption	2,5 W 5 VA
Protection degree	IP65
Manual override	impulse 1/2 positions

## CODIFICATION KEY

E	L	1	8	F	2	5	0	
		1	2	3	4	5		

### 1 Series 2 Type

EL18F = ESSENTIAL Valves 18 mm - G1/8	2 = 5/2	6 = 3/2+3/2 NC-NC
	3 = 5/3 c.c.	7 = 3/2+3/2 NC-NO
	4 = 5/3 o.c.	8 = 3/2+3/2 NO-NO
	5 = 5/3 p.c.	

### 3 Control 14 4 Return 12 5 Variant

3 = Pneumatic amplified	0 = Pneumomechanical spring	D = External pilot supply
5 = Electrical amplified DC/AC	1 = Mechanical spring	
	3 = Pneumatic amplified	
	5 = Electrical amplified DC/AC	

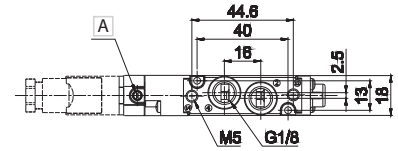
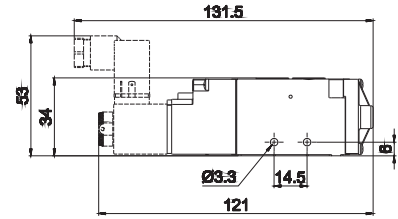
c.c. = closed centers o.c. = open centers p.c. = pressurized centers

### Single solenoid valve



A Manual override

2 - 4 = Outlet  
14 = Control  
12 = Return



Weight (Kg): 0.168

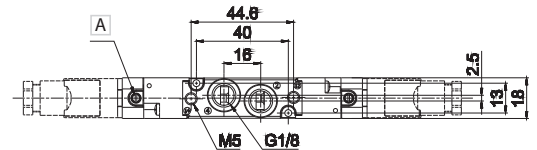
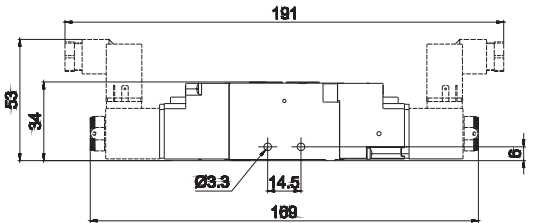
	Symbol	Control	Return	Pressure bar	Resp. Time (ms)		Part no.
					En.	De-en.	
5/2		14	12	1.9 to 8	15	24	EL18F250
5/2		14	12	2 to 8	12	21	EL18F251

### Double solenoid valve



A Manual override

2 - 4 = Outlet  
14 = Control  
12 = Return



Weight (Kg): 0.192

	Symbol	Control	Return	Pressure bar	Resp. Time (ms)		Part no.
					En.	De-en.	
5/2		14	12	1 to 8	11	11	EL18F255
5/3 c.c.		14	12	1.9 to 8	11	35	EL18F355
5/3 o.c.		14	12	1.9 to 8	11	35	EL18F455
5/3 p.c.		14	12	1.9 to 8	11	35	EL18F555
3/2 NC + 3/2 NC		14	12	1.5 to 8	14	16	EL18F655
3/2 NC + 3/2 NO		14	12	1.5 to 8	14	16	EL18F755
3/2 NO + 3/2 NO		14	12	1.5 to 8	14	16	EL18F855

c.c. = closed centres    o.c. = open centres    p.c. = pressurized centres

Solenoid valves are supplied without coil/connector/locking nut

#### Coil

- DL-0050 12 V DC 2,5 W
- DL-0051 24 V DC 2,5 W
- DL-0106 24 V AC 50/60 Hz 5 VA
- DL-0108 110 V AC 50/60 Hz 5 VA
- DL-0124 230 V AC 50/60 Hz 5 VA

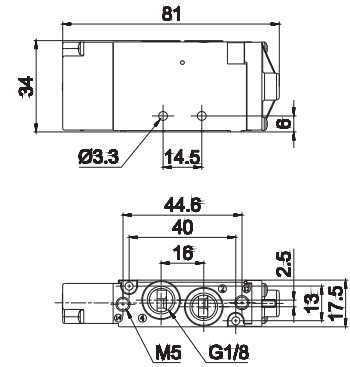
#### Connector

AM-5109

Single pilot valve



2 - 4 = Outlet  
14 = Control  
12 = Return



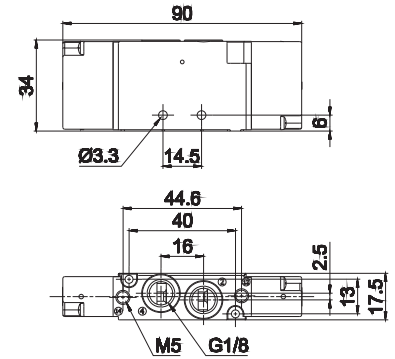
Weight (Kg): 0.149

	Symbol	Control	Return	Pressure	Resp. Time (ms)		Part no.
					14	12	
5/2		pilot	pneumo mechanical spring	1.9 to 10	11	15	EL18F230
5/2		pilot	mechanical spring	2 to 10	10	14	EL18F231

Double pilot valve



2 - 4 = Outlet  
14 = Control  
12 = Return

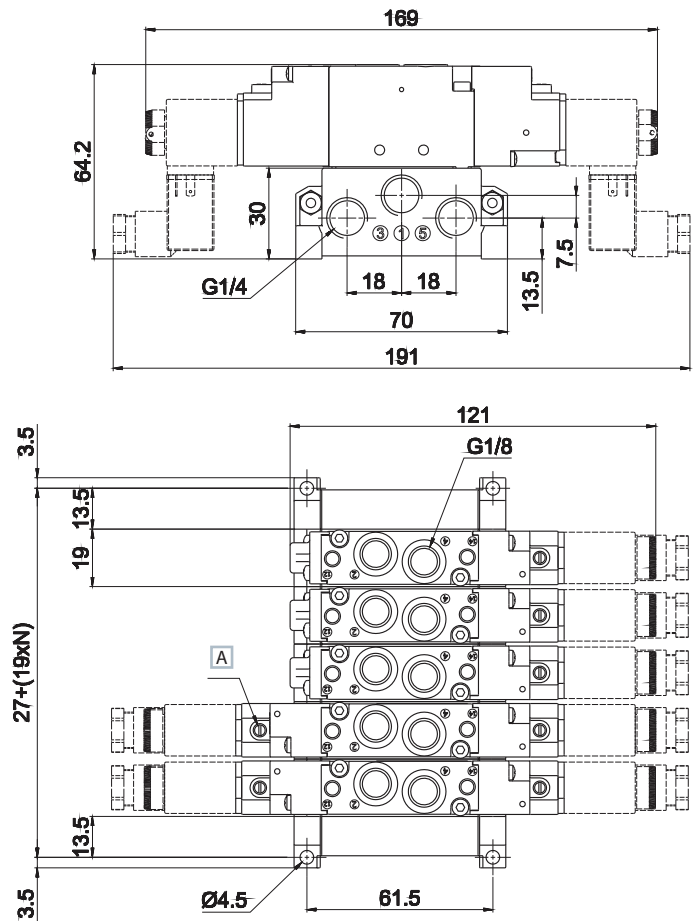
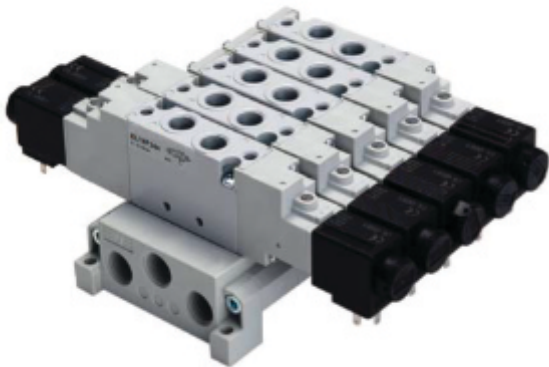


Weight (Kg): 0.154

	Symbol	Control	Return	Pressure	Resp. Time (ms)		Part no.
					14	12	
5/2		pilot	pilot	0.7 to 10	10	10	EL18F233
5/3 c.c.		pilot	pilot	1.9 to 10	9	21	EL18F333
5/3 o.c.		pilot	pilot	1.9 to 10	9	21	EL18F433
5/3 p.c.		pilot	pilot	1.9 to 10	9	21	EL18F533
3/2 NC + 3/2 NC		pilot	pilot	1.5 to 10	10	14	EL18F633
3/2 NC + 3/2 NO		pilot	pilot	1.5 to 10	10	14	EL18F733
3/2 NO + 3/2 NO		pilot	pilot	1.5 to 10	10	14	EL18F833

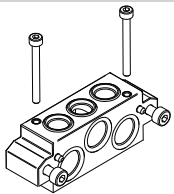
c.c. = closed centres    o.c. = open centres    p.c. = pressurized centres

Modular sub-base in technopolymer



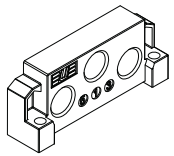
- A Manual override
- 1 = Inlet
- 2 - 4 = Outlet
- 3 - 5 = Exhaust
- 14 = Control
- 12 = Return
- N = Number of valve places

EL18SF300



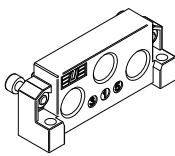
Sub-base 1 place  
Screws and seals are included

EL18SF515



Left supply plate G1/4

EL18SF516



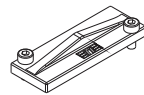
Right supply plate G1/4  
Screws and seals are included

EL18SF518



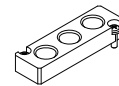
Fixing spring for DIN rail  
Screws are included

EL18SF560



Closing plate for unused  
valve place  
Screws are included

EL18SF570



Intermediate supply plate  
Screws are included

EL18SF550



Pressure separator

Coil and connector

■ Coil



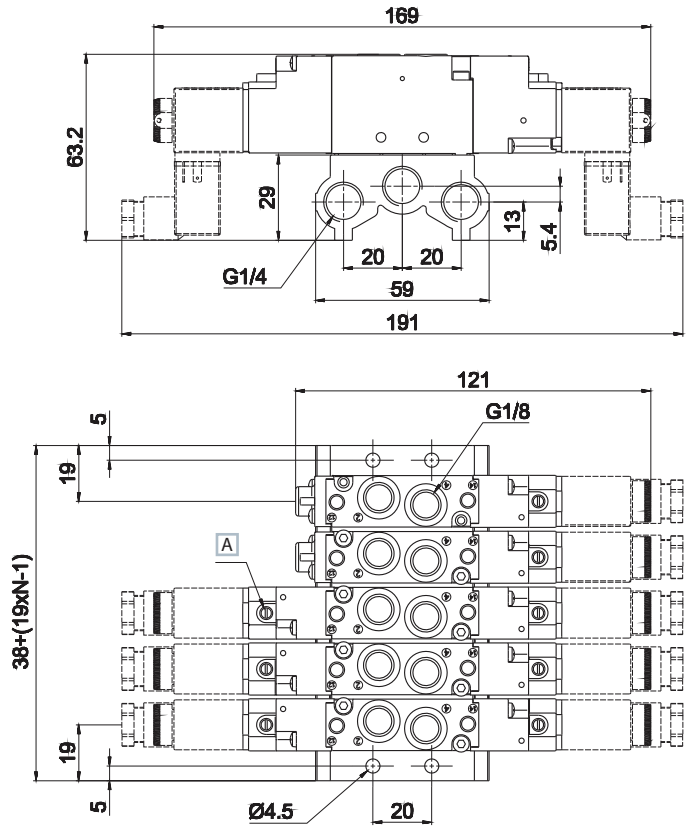
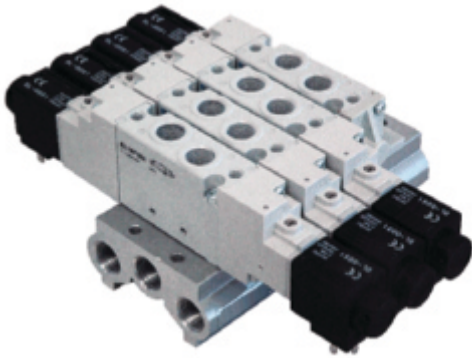
- DL-0050 12 V DC 2,5 W
- DL-0051 24 V DC 2,5 W
- DL-0106 24 V AC 50/60 Hz 5 VA
- DL-0108 110 V AC 50/60 Hz 5 VA
- DL-0124 230 V AC 50/60 Hz 5 VA

■ Connector



AM-5109

Aluminum sub-base



Part No.	No. Positions
EL18SF900-02	2
EL18SF900-03	3
EL18SF900-04	4
EL18SF900-05	5
EL18SF900-06	6
EL18SF900-07	7
EL18SF900-08	8
EL18SF900-09	9
EL18SF900-10	10



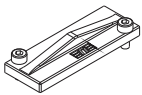
A Manual override

- 1 = Inlet
- 2 - 4 = Outlet
- 3 - 5 = Exhaust
- 14 = Control
- 12 = Return

N = Number of valve places

The sub-base includes gaskets and screws for mounting valves

EL18SF560



Closing plate for unused valve place  
Screws are included



# EL22F

ESSENTIAL Valves 22 mm - G1/4

Available ATEX version upon request

CE  II 3 GD c nAll T5 - 10°C ≤ Ta ≤ 45°C



## TECHNICAL CHARACTERISTICS

Ambient temperature	-5 to 50 °C
Fluid temperature	Max 50 °C
Fluid	filtered air 10 µm, with or without lubrication
Mechanical system	spool
Ways/positions	5/2 - 5/3 - 3/2+3/2
Max pressure	8 bar (electrical control) 10 bar (pneumatic control)
Control	indirect electropneumatic, pneumatic
Return	mechanical spring, indirect electro pneumatic, pneumomechanical spring
Connections	G1/4
Nominal flowrate (NI/min)	1700 (5/2) 1450 (5/3) 1450 (3/2+3/2)

## CONSTRUCTIVE CHARACTERISTICS

Valve body	aluminum
Seals	nitrile rubber
Actuators	technopolymer
Sub-base	technopolymer/aluminum
Spool	aluminum

## ELECTRICAL CHARACTERISTICS

Electropilot	electropilot U06
Coil	DL series
Voltage	12 V DC - 24 V DC - 24 V AC - 110 V AC - 230 V AC
Power consumption	2.5 W 5 VA
Protection degree	IP65
Manual override	impulse 1/2 positions

## CODIFICATION KEY

E	L	2	2	F	2	5	0	
		1	2	3	4	5		

<b>1 Series</b> EL22F = ESSENTIAL Valves 22 mm - G1/4	<b>2 Type</b> 2 = 5/2      6 = 3/2+3/2 NC-NC 3 = 5/3 c.c.      7 = 3/2+3/2 NC-NO 4 = 5/3 o.c.      8 = 3/2+3/2 NO-NO 5 = 5/3 p.c.
--	---

<b>3 Control 14</b> 3 = Pneumatic amplified 5 = Electrical amplified DC/AC	<b>4 Return 12</b> 0 = Pneumomechanical spring 1 = Mechanical spring 3 = Pneumatic amplified 5 = Electrical amplified DC/AC	<b>5 Variant</b> D = External pilot supply
--	---	---

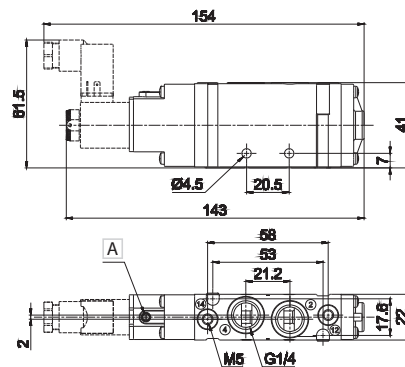
c.c. = closed centers   o.c. = open centers   p.c. = pressurized centers

### Single Solenoid Valve



A Manual override

2 - 4 = Outlet  
14 = Control  
12 = Return



Weight (Kg): 0.208

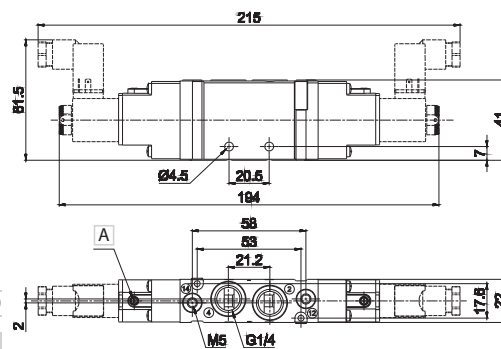
	Symbol	Control	Return	Pressure bar	Resp. Time (ms)		Part no.
					En.	De-en.	
5/2		14 solenoid	12 pneumo mechanical spring	1.5 to 8	15	24	EL22F250
5/2		14 solenoid	12 mechanical spring	1.9 to 8	12	21	EL22F251

### Double Solenoid Valve



A Manual override

2 - 4 = Outlet  
14 = Control  
12 = Return



Weight (Kg): 0.210

	Symbol	Control	Return	Pressure bar	Resp. Time (ms)		Part no.
					En.	De-en.	
5/2		14 solenoid	12 solenoid	1.5 to 8	16	16	EL22F255
5/3 c.c.		14 solenoid	12 solenoid	1.9 to 8	11	35	EL22F355
5/3 o.c.		14 solenoid	12 solenoid	1.9 to 8	11	35	EL22F455
5/3 p.c.		14 solenoid	12 solenoid	1.9 to 8	11	35	EL22F555
3/2 NC + 3/2 NC		14 solenoid	12 solenoid	1.5 to 8	14	16	EL22F655
3/2 NC + 3/2 NO		14 solenoid	12 solenoid	1.9 to 8	14	16	EL22F755
3/2 NO + 3/2 NO		14 solenoid	12 solenoid	1.9 to 8	14	16	EL22F855

c.c. = closed centres    o.c. = open centres    p.c. = pressurized centres

#### Coil

- DL-0050 12 V DC 2,5 W
- DL-0051 24 V DC 2,5 W
- DL-0106 24 V AC 50/60 Hz 5 VA
- DL-0108 110 V AC 50/60 Hz 5 VA
- DL-0124 230 V AC 50/60 Hz 5 VA

#### Connector

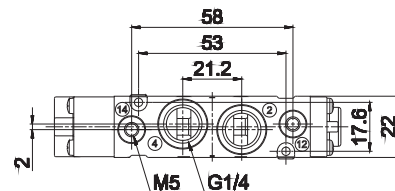
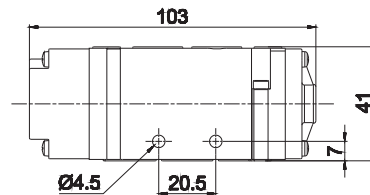
AM-5109

Solenoid valves are supplied without coil/connector/locking nut

Single pilot valve



2 - 4 = Outlet  
14 = Control  
12 = Return



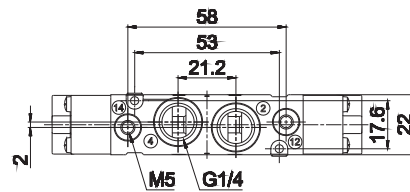
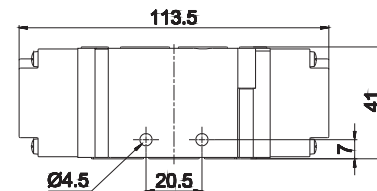
Weight (Kg): 0.042

	Symbol	Control	Return	Pressure bar	Resp. Time (ms)		Part no.
					14	12	
5/2		pilot	pneumo mechanical spring	1,9÷10	11	15	EL22F230
5/2		pilot	mechanical spring	2÷10	10	14	EL22F231

Double pilot valve



2 - 4 = Outlet  
14 = Control  
12 = Return

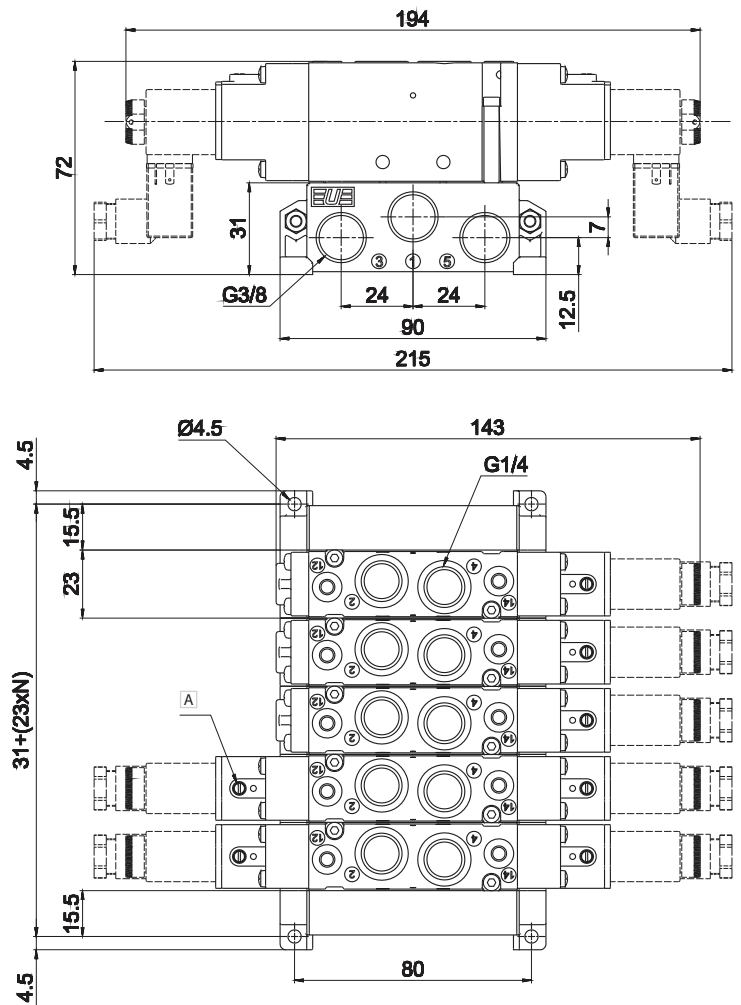
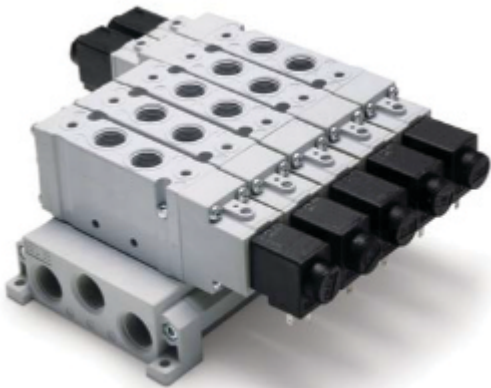


Weight (Kg): 0.044

	Symbol	Control	Return	Pressure bar	Resp. Time (ms)		Part no.
					14	12	
5/2		pilot	pilot	0.7 to 10	10	10	EL22F233
5/3 c.c.		pilot	pilot	1.6 to 10	9	21	EL22F333
5/3 o.c.		pilot	pilot	1.6 to 10	9	21	EL22F433
5/3 p.c.		pilot	pilot	1.6 to 10	9	21	EL22F533
3/2 NC + 3/2 NC		pilot	pilot	1.3 to 10	10	14	EL22F633
3/2 NC + 3/2 NO		pilot	pilot	1,3÷10	10	14	EL22F733
3/2 NO + 3/2 NO		pilot	pilot	1,3÷10	10	14	EL22F833

c.c. = closed centres    o.c. = open centres    p.c. = pressurized centres

Modular sub-base in technopolymer

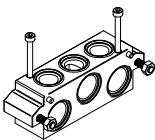


A Manual override

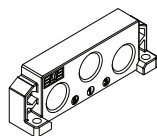
- 1 = Inlet
- 2 - 4 = Outlet
- 3 - 5 = Exhaust
- 14 = Control
- 12 = Return

N = Number of valve places

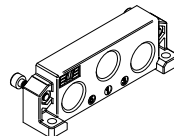
EL22SF300      EL22SF515      EL22SF516      EL18SF518      EL22SF550



Sub-base 1 place (screws and seals are included)



Left supply plate G3/8



Right supply plate G3/8 (screws and seals are included)

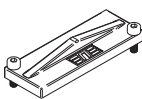


Fixing spring for DIN rail (screws are included)

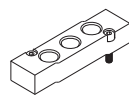


Pressure separator

EL22SF560      EL22SF570



Closing plate for unused valve place (screws are included)



Intermediate supply plate (screws are included)

Coil and connector

■ Coil



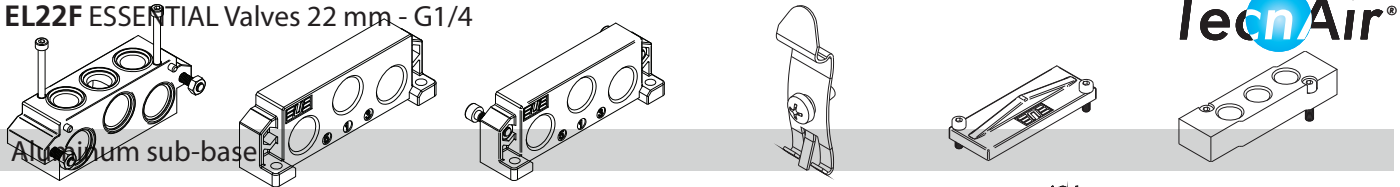
- DL-0050 12 V DC 2,5 W
- DL-0051 24 V DC 2,5 W
- DL-0106 24 V AC 50/60 Hz 5 VA
- DL-0108 110 V AC 50/60 Hz 5 VA
- DL-0124 230 V AC 50/60 Hz 5 VA

■ Connector



AM-5109

**EL22F ESSENTIAL Valves 22 mm - G1/4**



Sub-base 1 place  
Screws and seals are included

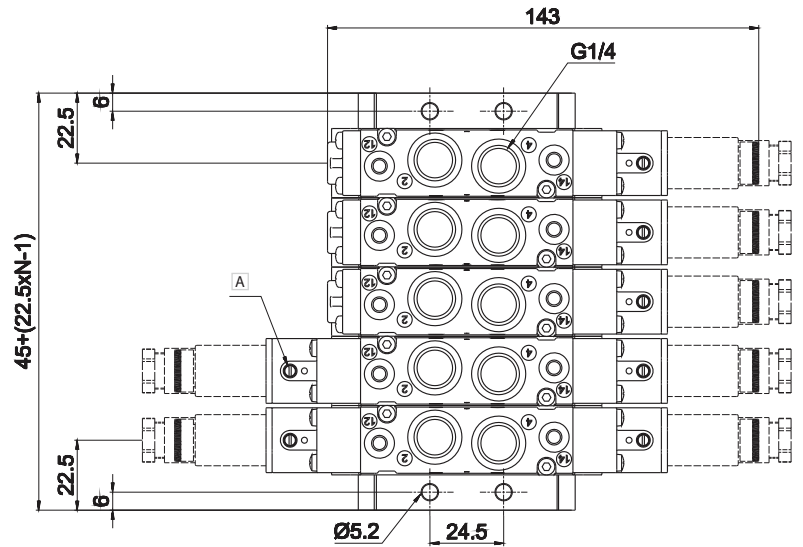
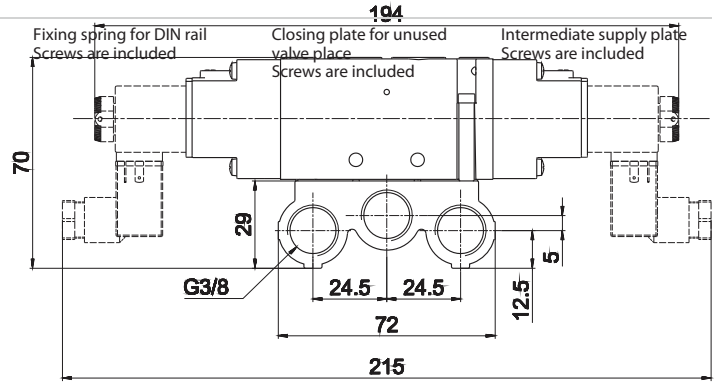
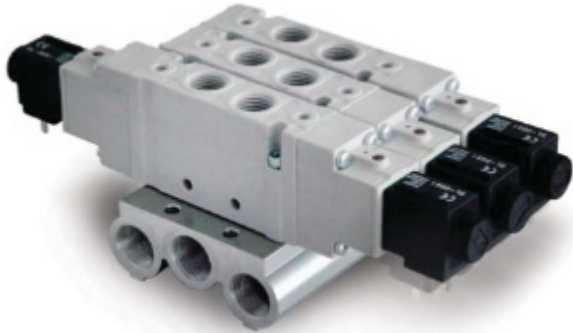
Left supply plate G3/8

Right supply plate G3/8  
Screws and seals are included

Fixing spring for DIN rail  
Screws are included

Closing plate for unused  
valve place  
Screws are included

Intermediate supply plate  
Screws are included



Part No.	No. Positions
EL22SF900-02	2
EL22SF900-03	3
EL22SF900-04	4
EL22SF900-05	5
EL22SF900-06	6
EL22SF900-07	7
EL22SF900-08	8
EL22SF900-09	9
EL22SF900-10	10



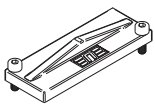
The sub-base includes gaskets and screws for mounting valves

A Manual override

- 1 = Inlet
- 2 - 4 = Outlet
- 3 - 5 = Exhaust
- 14 = Control
- 12 = Return

N = Number of valve places

**EL22SF560**



Closing plate for unused  
valve place  
Screws are included